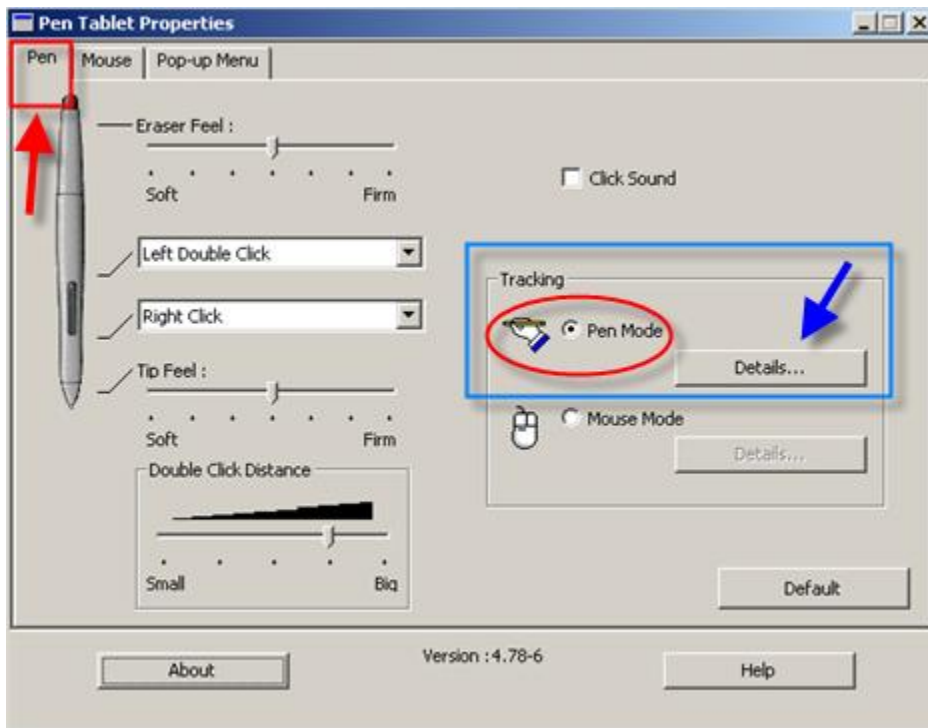


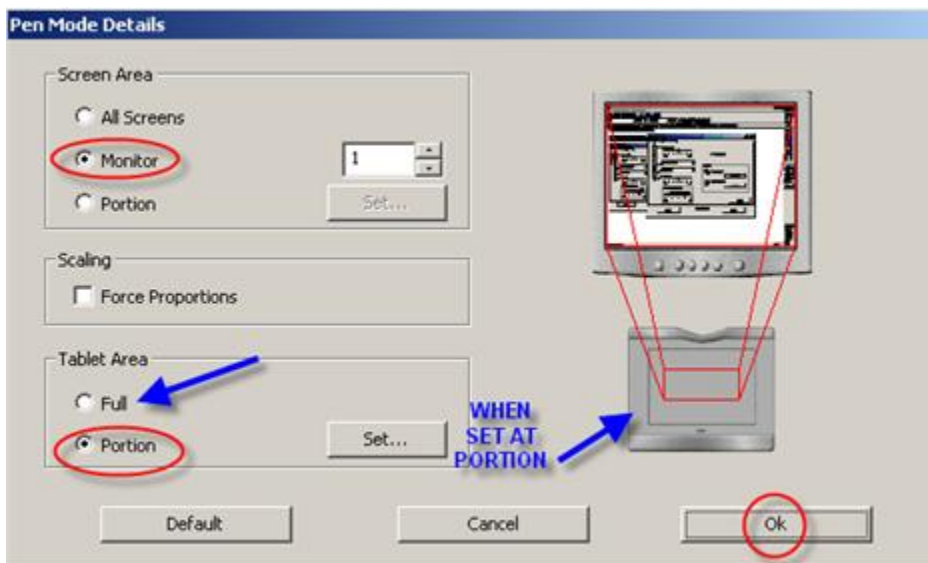
DRAWING WITH THE WACOM TABLET.

Open the Pen Properties Menu. - Start - Programs - Tablet - Pen Properties menu.
Select the Pen menu. Then go to the Pen Mode Details Menu.

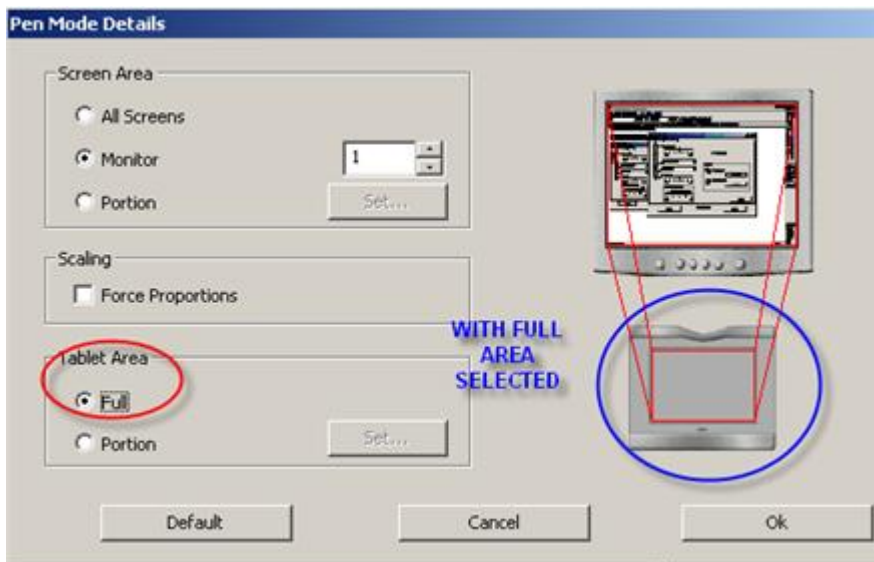


On this menu make sure you have Monitor selected.

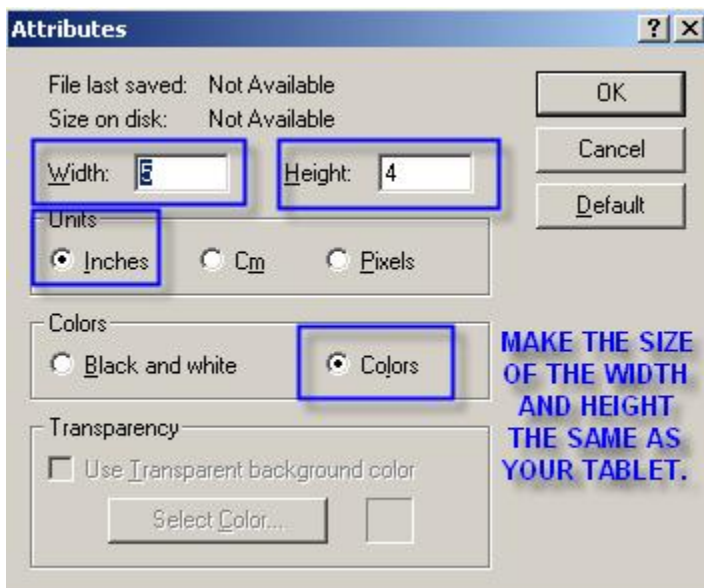
When you have Portion selected the menu looks like this. This allow you to use the tablet with a smaller area so that you aren't moving your hand around the area too much. It allows you to just use the wrist.



If you change the Tablet Area to Full you will use the whole tablet area (see below).



Next Open Paint - Start - Programs - Accessories - Paint.
 Select Image - Attributes from the top menu.
 On this menu select the following.



Next select View - Zoom - Large Size.
 The whole area should now be white.

Place an image over your Wacom tablet work area.
 Preferably in the centre of this area.
 You don't need to place it under the plastic screen unless you need too.

Hold the image firmly and trace around it.

SELECT THE COLOURS AS YOU
GO.

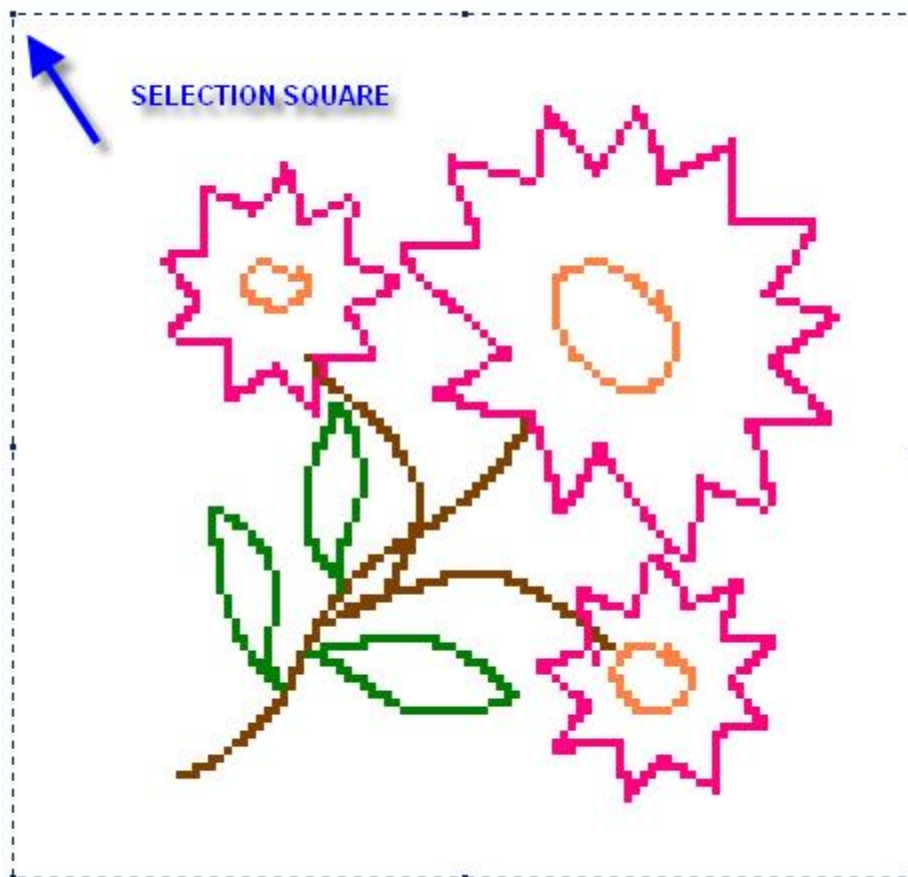
SELECT
THE SIZE
OF YOUR
PENCIL

EDIT THE AREAS
WHERE YOU
HAVE MAD A
MISTAKE

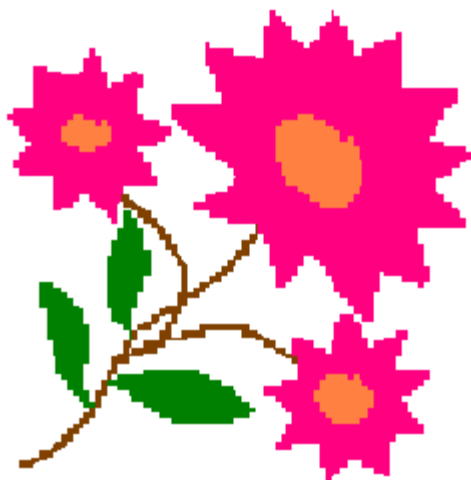
Save the original image you just drew so you don't lose it.
Now go to View - Zoom - Normal View.

Use the select tool to drag around the actual image you have drawn.





Now just drag the image out to the size that you want to use. I make it so that the image fits within my hoop size.



Hope this helps.

Have Fun

Vanessa